

California State Senate

SENATOR
ROSILICIE OCHOA BOGH
NINETEENTH SENATE DISTRICT



1021 O STREET
SACRAMENTO, CA 95814
(916) 651-4019
SENATOR OCHOABOGH@SENATE.CA.GOV
SR19.SENATE.CA.GOV

COMMITTEES
BUDGET & FISCAL REVIEW
EDUCATION
VICE CHAIR
ENERGY, UTILITIES
& COMMUNICATIONS
VICE CHAIR
GOVERNMENTAL ORGANIZATION
HOUSING
HUMAN SERVICES
VICE CHAIR
PRIVACY, DIGITAL TECHNOLOGIES,
AND CONSUMER PROTECTION
JOINT LEGISLATIVE BUDGET

March 13, 2026

The Honorable Alex Padilla
United States Senator
331 Hart Senate Office Building
Washington, D.C. 20510

The Honorable Adam Schiff
United States Senator
112 Hart Senate Office Building
Washington, D.C. 20510

RE: Support for Highway 111 Safety Improvement Project – FY27 Congressionally Directed Spending

Dear Senator Padilla & Senator Schiff:

I write this letter in support for the City of Indian Wells' FY27 Congressionally Directed Spending request for the Highway 111 Safety Improvement Project.

Highway 111 is the primary arterial backbone of the Coachella Valley, serving as the essential link for regional commerce, tourism, and daily commuting. The proposed improvements in Indian Wells are not merely local enhancements; they are critical to the integrity of the entire corridor. Furthermore, the safety enhancements and roadway reconfigurations addressed in this proposal target high-priority segments where regional traffic volumes have created documented risks. Modernizing this infrastructure is essential to accommodate the continued growth of the Coachella Valley and to ensure a safe, efficient, and interconnected regional network. We respectfully urge your full consideration of this funding request.

I support this request by the City of Indian Wells. If you have any questions, please contact my District Office at (909) 335-0271.

Sincerely,

A handwritten signature in black ink, appearing to read "Rosilicie Ochoa Bogh".

ROSILICIE OCHOA BOGH
Senator, 19th District

March 4, 2026

Honorable Alex Padilla
United States Senator
331 Hart Senate Office Building
Washington, DC 20510

Honorable Adam Schiff
United States Senator
112 Hart Senate Office Building
Washington, DC 20510

Honorable Ken Calvert
United States House of Representatives
2205 Rayburn House Office Building
Washington, DC 20515

RE: Support for Highway 111 Safety Improvement Project – FY27 Congressionally Directed Spending/Community Project Funding

Dear Senator Padilla, Senator Schiff, and Congressman Calvert:

The City of La Quinta is writing to formally express its support for the City of Indian Wells' FY27 Congressionally Directed Spending/Community Project Funding requests for the Highway 111 Improvement Project. This initiative represents a necessary investment in the safety and modernization of the Highway 111 corridor, which serves as a vital economic and transit artery for our residents and local businesses.

The proposed project focuses on specific high-priority segments where increased traffic volumes have led to documented safety concerns. By integrating advanced signal technology and pedestrian safety enhancements, the City aims to reduce the frequency of collisions while improving the overall efficiency of this essential route. These improvements include critical roadway reconfigurations designed to better manage the flow of vehicles entering and exiting our commercial districts.

The City of La Quinta will also benefit from improved traffic flow, enhanced regional connectivity, and safer travel conditions along Highway 111, which serves as a key link between our neighboring communities. These upgrades will support local commerce, tourism, and daily commutes, strengthening the shared economic vitality of the Coachella Valley.

Modernizing this corridor is essential for protecting our community and ensuring that our infrastructure can support the continued growth of the Coachella Valley. Thank you for your continued leadership and your commitment to our region.

Sincerely,



Linda Evans, Mayor



March 2, 2026

Honorable Ken Calvert
United States Congress
2205 Rayburn House Office Building
Washington, DC 20515

RE: Support for Highway 111 Safety Improvement Project – FY27 Community Project Funding

Dear Representative Calvert,

As Mayor of the City of Indian Wells, I am writing to formally support our FY27 Community Project Funding request. This \$2,000,000 initiative represents a vital investment in the safety, mobility, and modernization of the Highway 111 corridor, which serves as the primary arterial backbone of our community.

The proposed project focuses on three high-priority segments along Highway 111 where significant traffic volumes and documented safety concerns necessitate immediate intervention. By integrating advanced signal technology, pedestrian safety enhancements, and critical roadway reconfigurations, the City aims to reduce the frequency and severity of collisions while improving the overall efficiency of this essential transit route.

These improvements are essential for protecting our residents and the thousands of commuters who utilize this corridor daily. The City of Indian Wells is prepared to move forward with these enhancements to ensure our infrastructure meets the evolving needs of the Coachella Valley.

I respectfully request your full consideration of this safety project. Thank you for your continued leadership and your commitment to the residents of Indian Wells.

Sincerely,

A handwritten signature in black ink, appearing to read "Dr. Toper Taylor".

Dr. Toper Taylor
Mayor, City of Indian Wells



CITY OF PALM DESERT

73-510 FRED WARING DRIVE
PALM DESERT, CALIFORNIA 92260-2578
TEL: 760-346-0611
INFO@PALMDESERT.GOV

March 5, 2026

The Honorable Alex Padilla
United States Senate
331 Hart Senate Office Building
Washington, DC 20510

The Honorable Ken Calvert
United States House of Representatives
2205 Rayburn House Office Building
Washington, DC 20515

The Honorable Adam Schiff
United States Senate
112 Hart Senate Office Building
Washington, DC 20510

RE: Support for Highway 111 Safety Improvement Project – FY27 Congressionally Directed Spending/Community Project Funding

Dear Senator Padilla, Senator Schiff, and Congressman Calvert:

On behalf of the City of Palm Desert, I write in strong support of the City of Indian Wells' Fiscal Year 2027 Congressionally Directed Spending / Community Project Funding request for the Highway 111 Safety Improvement Project.

Highway 111 serves as a vital economic and transportation corridor for residents, workers, and businesses throughout the Coachella Valley. Increasing traffic volumes along key segments of the corridor have contributed to documented safety concerns and operational challenges affecting multiple jurisdictions in the region.

The proposed project focuses on targeted improvements to high-priority segments of Highway 111. Planned upgrades include advanced signal technology, pedestrian safety enhancements, and roadway reconfigurations designed to better manage traffic flow and improve access to surrounding commercial areas. These improvements will help reduce collisions, enhance pedestrian safety, and improve overall corridor efficiency.

Modernizing this corridor is essential to protecting public safety and ensuring that transportation infrastructure across the Coachella Valley can support continued economic activity and regional growth.

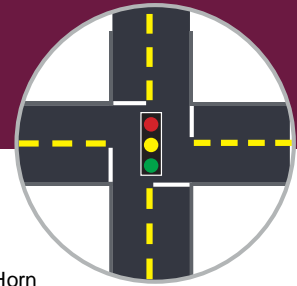
For these reasons, the City of Palm Desert respectfully urges your support of the City of Indian Wells' Community Project Funding request for the Highway 111 Safety Improvement Project.

Sincerely,

Evan Trubee
Mayor, City of Palm Desert



Case Study Sheet: Location #2



Project Name: Indian Wells SAP
Agency Name: City of Indian Wells
Contact Name:
Email:

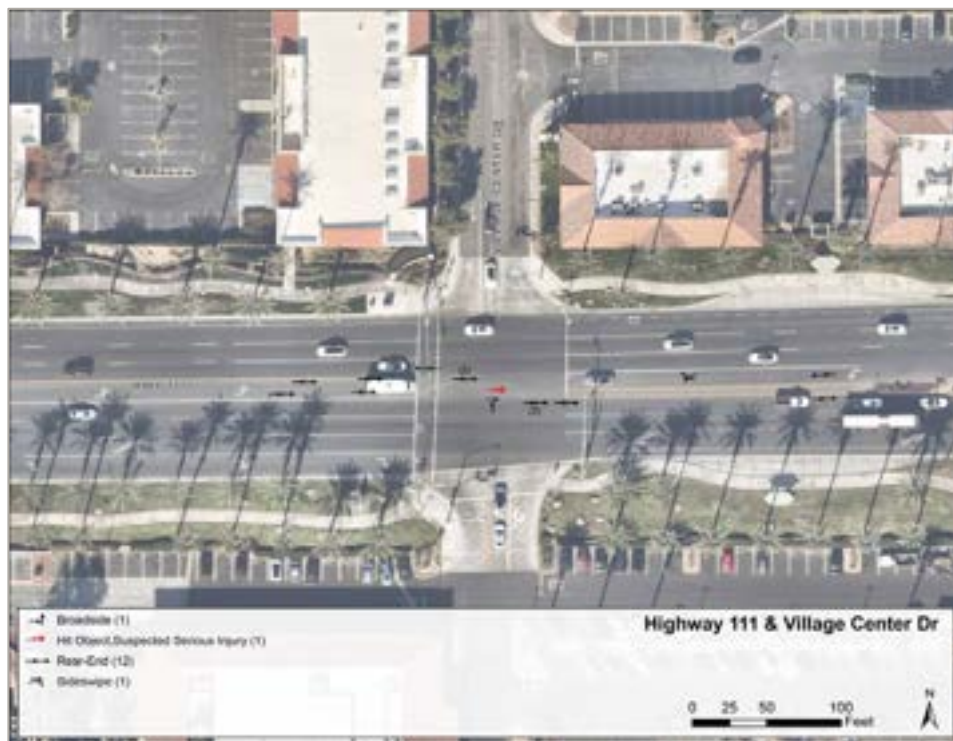
Prepared by: Kimley-Horn
Checked by:
Date: 2024

SIGNALIZED INTERSECTION

Project Location, Description & Maps

Intersection: Highway 111 & Village Center Drive

Example of Similar Intersections: Fred Waring Drive & Warner Trail



Case Study Sheet: Location #2

Project Location, Description & Maps

Collision Data	
Total Collisions	15
Fatal and Severe Injury Collisions	1
Top 3 Collision Types (%)	Rear-End (80%) Broadside (7%) Hit Object (7%)
Dark Collisions	2
Impaired Collisions	1

Collision Data	
Number of Approaches	4
Total Entering Vehicles	34,850
Crosswalk Condition	Good
Control Type	Signalized
Lighting	Well Lit
Highest Posted Speed Limit	55

Collisions Involved With		
Vehicular	Pedestrian	Bicycle
15	0	0

Field Visit Notes

- Aggressive driving
- Vehicles driving through eastbound right turn only lane
- High speeds

Countermeasure Evaluation

Potential Countermeasures	Crash Reduction Factor (LRSM/CMF ID)	20 Year Safety Benefit	Total 20-Year Costs	Safety Related B/C Ratio
High visibility crosswalks (all intersections, painted crosswalks at selected locations)	35% (R35PB)	\$1,015,525	\$180,000	5.64
Advanced dilemma zone on existing cameras	5%	\$145,075	\$32,000	4.53
Complete crosswalks	25% (R35PB)	1,015,525	\$43,200	23.51

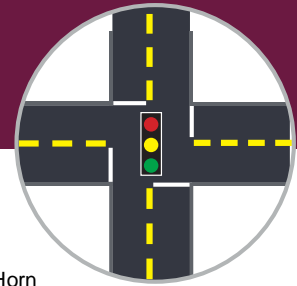
Case Study Sheet: Location #2

Countermeasure Evaluation (continued)

Potential Countermeasures	Crash Reduction Factor (LRSM/CMF ID)	20 Year Safety Benefit	Total 20-Year Costs	Safety Related B/C Ratio
Bus warning signage for bus stop pockets	15% (NS06)	\$435,225	\$16,800	25.90



Case Study Sheet: Location #3



Project Name: Indian Wells SAP
Agency Name: City of Indian Wells
Contact Name:
Email:

Prepared by: Kimley-Horn
Checked by:
Date: 2024

SIGNALIZED INTERSECTION

Project Location, Description & Maps

Intersection: Highway 111 & Cook Street

Example of Similar Intersections: Highway 111 & Miles Avenue



Case Study Sheet: Location #3

Project Location, Description & Maps

Collision Data	
Total Collisions	37
Fatal and Severe Injury Collisions	5
Top 3 Collision Types (%)	Rear-End (62%) Broadside (11%) Sideswipe (11%)
Dark Collisions	15
Impaired Collisions	6

Collision Data	
Number of Approaches	4
Total Entering Vehicles	43,375
Crosswalk Condition	Good
Control Type	Signalized
Lighting	Well Lit
Highest Posted Speed Limit	55

Collisions Involved With		
Vehicular	Pedestrian	Bicycle
37	0	0

Field Visit Notes

- Vehicles driving through eastbound right turn only lane
- High speeds
- Lots of pedestrian activity

Countermeasure Evaluation

Potential Countermeasures	Crash Reduction Factor (LRSM/CMF ID)	20 Year Safety Benefit	Total 20-Year Costs	Safety Related B/C Ratio
Advanced dilemma zone	5%	\$632,880	\$32,000	19.78
Install high visibility crosswalks with Leading Pedestrian Interval (LPI)	60% (S21PB)	\$7,594,560	\$18,240	138.08
Install speed feedback signage	30% (R26)	\$3,797,280	\$68,400	55.52

Case Study Sheet: Location #3

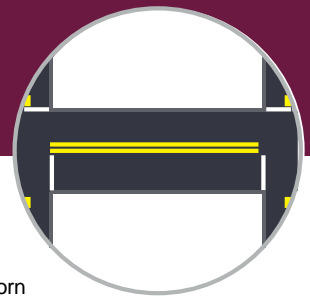
Countermeasure Evaluation (continued)

Potential Countermeasures	Crash Reduction Factor (LRSM/CMF ID)	20 Year Safety Benefit	Total 20-Year Costs	Safety Related B/C Ratio
Curb Extensions (bulb-outs) at intersections*	35% (R35PB)	\$4,430,160	\$200,000	22.15
Curb Extensions (bulb-outs) paint at intersections*	35% (R35PB)	\$4,430,160	\$30,000	147.67

*countermeasures will only be feasible if the right turn lane does not become a through lane.



Case Study Sheet: Location #4



Project Name: Indian Wells SAP
Agency Name: City of Indian Wells
Contact Name:
Email:

Prepared by: Kimley-Horn
Checked by:
Date: 2024

**ROADWAY
 SEGMENT**

Project Location, Description & Maps

Segment: Highway 111 : Cook Street to Province Way
Example of Similar Segments: Highway 111: Indian Wells Lane to Club Drive



Case Study Sheet: Location #4

Project Location, Description & Maps

Collision Data	
Total Collisions	5
Fatal and Severe Injury Collisions	2
Top 3 Collision Types (%)	Rear-End (40%) Sideswipe (40%) Rear-End (23%)
Dark Collisions	1
Impaired Collisions	0

Collision Data	
Number of Approaches	4
Average Daily Traffic	34,250
Crosswalk Condition	Good
Lighting	Well Lit
Highest Posted Speed Limit	45

Collisions Involved With		
Vehicular	Pedestrian	Bicycle
4	1	0

Field Visit Notes

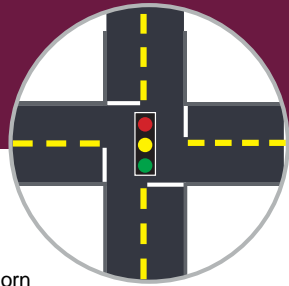
- Vehicles driving through eastbound right turn only lane
- High speeds

Countermeasure Evaluation

Potential Countermeasures	Crash Reduction Factor (LRSM/CMF ID)	20 Year Safety Benefit	Total 20-Year Costs	Safety Related B/C Ratio
Remove merging lane/ taper lane on the east leg	40% (R23)	\$240,345	\$30,000	8.01
Install sidewalk/pathway	80% (R34PB)	\$3,845,520	\$422,400	9.10
Move bus stop to remove conflict on the right turn lane	5%	\$240,345	\$100,000	2.40



Case Study Sheet: Location #7



Project Name: Indian Wells SAP
Agency Name: City of Indian Wells
Contact Name:
Email:

Prepared by: Kimley-Horn
Checked by:
Date: 2024

SIGNALIZED INTERSECTION

Project Location, Description & Maps

Intersection: Highway 111 & Indian Wells Lane

Example of Similar Intersections: Washington Street & Via Sevilla



Case Study Sheet: Location #7

Project Location, Description & Maps

Collision Data	
Total Collisions	25
Fatal and Severe Injury Collisions	1
Top 3 Collision Types (%)	Rear-Ends (68%) Broadside (16%) Hit-Object (8%)
Dark Collisions	5
Impaired Collisions	1

Collision Data	
Number of Approaches	4
Total Entering Vehicles	34,350
Crosswalk Condition	Good
Control Type	Signalized
Lighting	Well Lit
Highest Posted Speed Limit	55

Collisions Involved With		
Vehicular	Pedestrian	Bicycle
25	0	0

Field Visit Notes

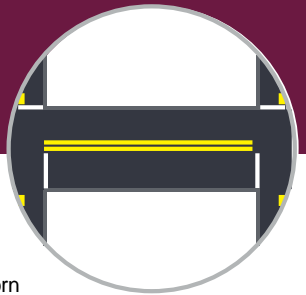
- High speeds – coming downhill eastbound
- High speeds overall

Countermeasure Evaluation

Potential Countermeasures	Crash Reduction Factor (LRSM/CMF ID)	20 Year Safety Benefit	Total 20-Year Costs	Safety Related B/C Ratio
High visibility crosswalk	35% (R35PB)	\$1,413,965	\$120,000	11.78
Curb extensions	35% (R35PB)	\$1,413,965	\$120,000	11.78
Flashing yellow left turn (southbound approach)	30% (S07)	\$1,211,790	\$45,600	26.58
Advanced Dilemma Zone (camera existing)	5%	\$201,995	\$8,000	25.25



Case Study Sheet: Location #8



Project Name: Indian Wells SAP
Agency Name: City of Indian Wells
Contact Name:
Email:

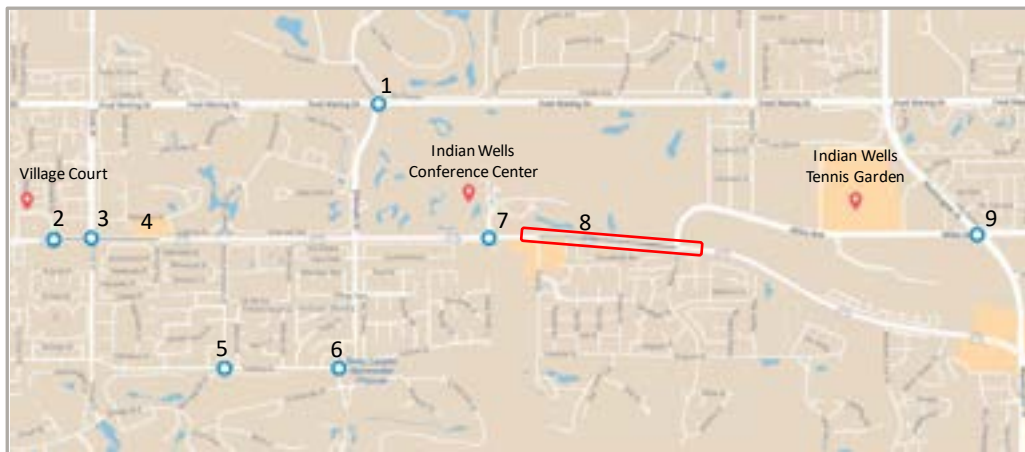
Prepared by: Kimley-Horn
Checked by:
Date: 2024

**ROADWAY
 SEGMENT**

Project Location, Description & Maps

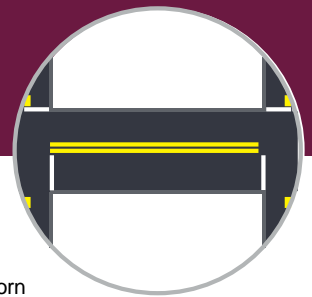
Segments: Highway 111: Miles Avenue & Mt. Cove

Example of Similar Segments: Eldorado Drive: Highway 111 to Fred Waring Drive





Case Study Sheet: Location #8



Project Name: Indian Wells SAP
Agency Name: City of Indian Wells
Contact Name:
Email:

Prepared by: Kimley-Horn
Checked by:
Date: 2024

**ROADWAY
SEGMENT**

Project Location, Description & Maps



Case Study Sheet: Location #8

Project Location, Description & Maps

Collision Data	
Total Collisions	16
Fatal and Severe Injury Collisions	0
Top 3 Collision Types (%)	Broadside (40%) Sideswipe (23%) Rear-End (23%)
Dark Collisions	11
Impaired Collisions	0

Collision Data	
Number of Approaches	4
Total Entering Vehicles	25,524
Crosswalk Condition	Good
Control Type	Hawk Signal
Lighting	Well Lit
Highest Posted Speed Limit	35

Collisions Involved With		
Vehicular	Pedestrian	Bicycle
26	3	1

Field Visit Notes

- Fast speeds
- Pedestrian and bicycle activity

Countermeasure Evaluation

Potential Countermeasures	Crash Reduction Factor (LRSM/CMF ID)	20 Year Safety Benefit	Total 20-Year Costs	Safety Related B/C Ratio
Extend existing median	25% (R08)	\$618,650	\$2,819,520	.22
Install delineators, reflectors and/or object markers	15% (R27)	\$371,190	\$81,600	4.55
Install speed feedback signage	15% (NS06)	\$371,190	\$16,800	22.09
Protected bike lanes	45% (R33PB)	\$1,113,570	\$84,000	2.65
Reduce lane width	5%	\$123,730	\$30,000	4.12

STATE CAPITOL
P.O. BOX 942849
SACRAMENTO, CA 94249-0047
(916) 319-2047
FAX (916) 319-2147

DISTRICT OFFICE
41608 INDIAN TRAIL, SUITE D1
RANCHO MIRAGE, CA 92270
(760) 346-6342
FAX (760) 346-6506

Assemblymember Wallis@assembly.ca.gov
<https://ad47.asmtc.org/>



COMMITTEES
VICE CHAIR, INSURANCE
BUDGET
ECONOMIC DEVELOPMENT, GROWTH, AND
HOUSEHOLD IMPACT
GOVERNMENTAL ORGANIZATION
UTILITIES AND ENERGY

SELECT COMMITTEES
CLIMATE INNOVATION AND INFRASTRUCTURE
EFFECTIVE POSTSECONDARY CAREER
TECHNICAL EDUCATION AND WORKFORCE
DEVELOPMENT PROGRAMS
HOUSING FINANCE AND AFFORDABILITY
INDEPENDENT RESTAURANT INDUSTRY IN
CALIFORNIA
MASTER PLAN FOR HIGHER EDUCATION IN
CALIFORNIA

BUDGET SUBCOMMITTEE NO. 3 ON
EDUCATION FINANCE
BUDGET SUBCOMMITTEE NO. 5 ON STATE
ADMINISTRATION

March 13, 2026

The Honorable Alex Padilla
United States Senate
331 Hart Senate Office Building
Washington, DC 20510

The Honorable Adam Schiff
United States Senate
112 Hart Senate Office Building
Washington, DC 20510

RE: Support for Highway 111 Safety Improvement Project – FY27 Congressionally Directed Spending

Dear Senator Padilla and Senator Schiff:

The City of Indian Wells' FY27 Congressionally Directed Spending request for the Highway 111 Safety Improvement Project warrants strong support, as these improvements will enhance safety along one of the Coachella Valley's most important transportation corridors.

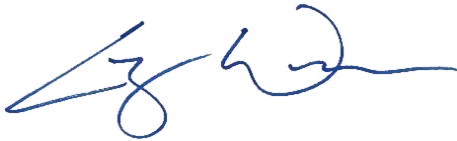
Highway 111 serves as the primary arterial backbone of the Coachella Valley, connecting residents, businesses, and visitors across the region while supporting daily commuting, tourism, and regional commerce. The proposed improvements in Indian Wells address segments of the corridor where traffic volumes and roadway conditions have created documented safety concerns. Targeted safety enhancements and roadway reconfigurations will help protect motorists, pedestrians, and cyclists while strengthening the reliability of this critical regional route.

Investments that improve the safety and functionality of Highway 111 benefit the entire Coachella Valley. As the region continues to grow, modernizing key transportation infrastructure will help ensure a safer, more efficient, and well-connected network for residents and visitors alike.

Hon. Alex Padilla
Hon. Adam Schiff
March 13, 2026
Page 2

Thank you for your continued leadership and your commitment to the residents of the Coachella Valley. If you have any questions, please feel free to contact my office at (760) 346-6342 or Assemblymember.Wallis@assembly.ca.gov.

Sincerely,

A handwritten signature in blue ink, appearing to read 'Greg Wallis', with a stylized flourish at the end.

GREG WALLIS
Assemblymember, 47th District

GW:na